

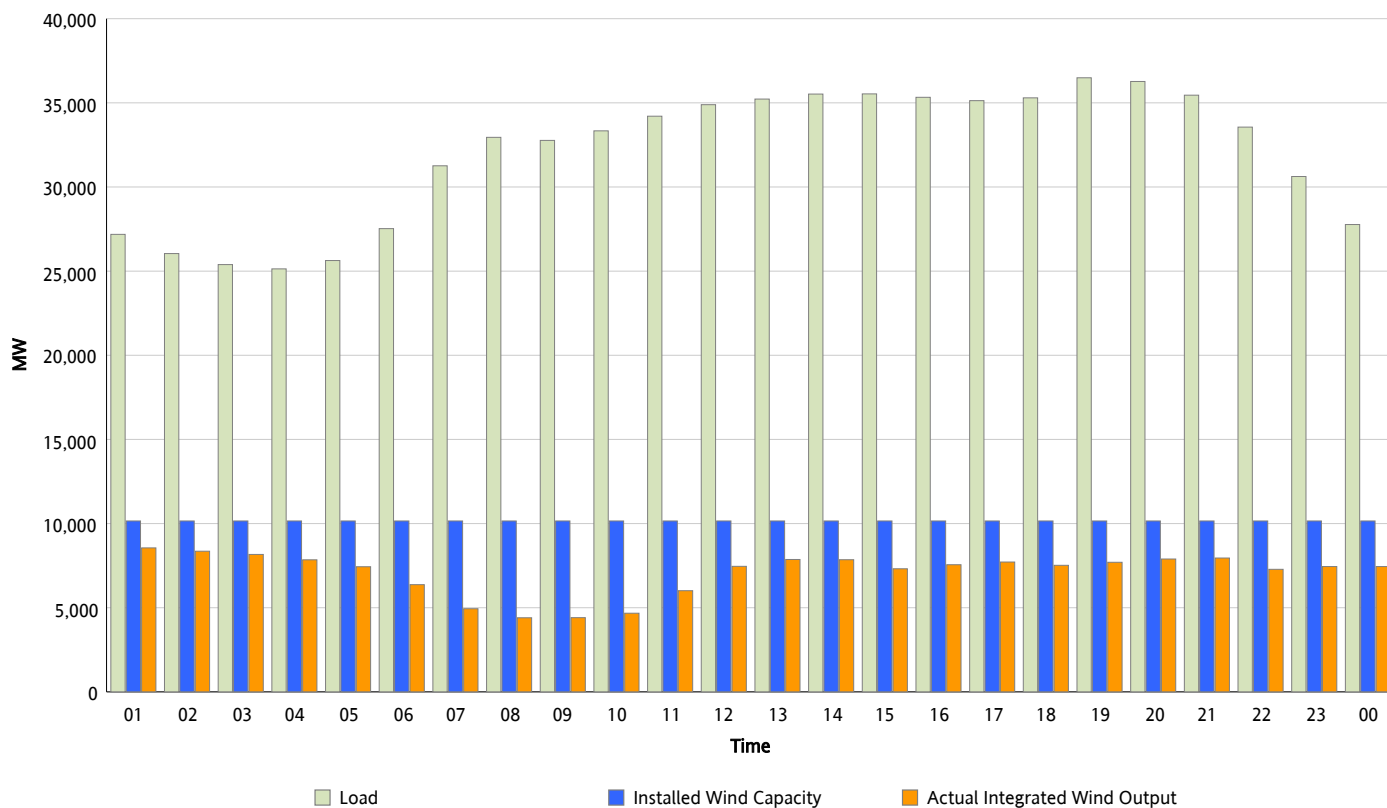


## ERCOT Grid Operations

### Wind Integration Report : 01/29/2013

Peak Load	36,490 MW
Load Peak Hour (HE)	19
Wind Over Peak	7,701 MW
Wind Record 01/29/13	8,667 MW
Max Wind Value*	8,667 MW
Wind Peak Time	00:34
Wind Integration %	32.1 %

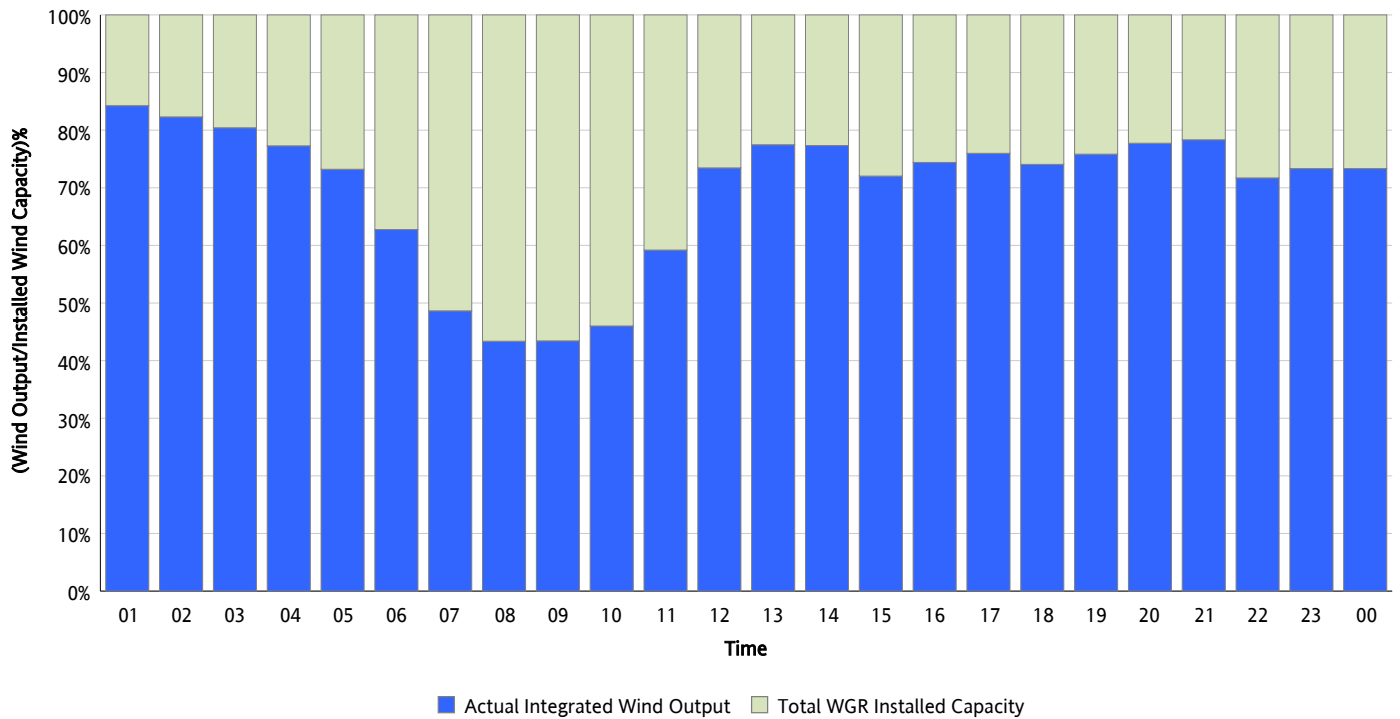
**Hourly Average Actual Load vs. Actual Wind Output**  
01/29/2013



\* Wind Record and Wind Max represent instantaneous values and the rest of the values are integrated over the hour

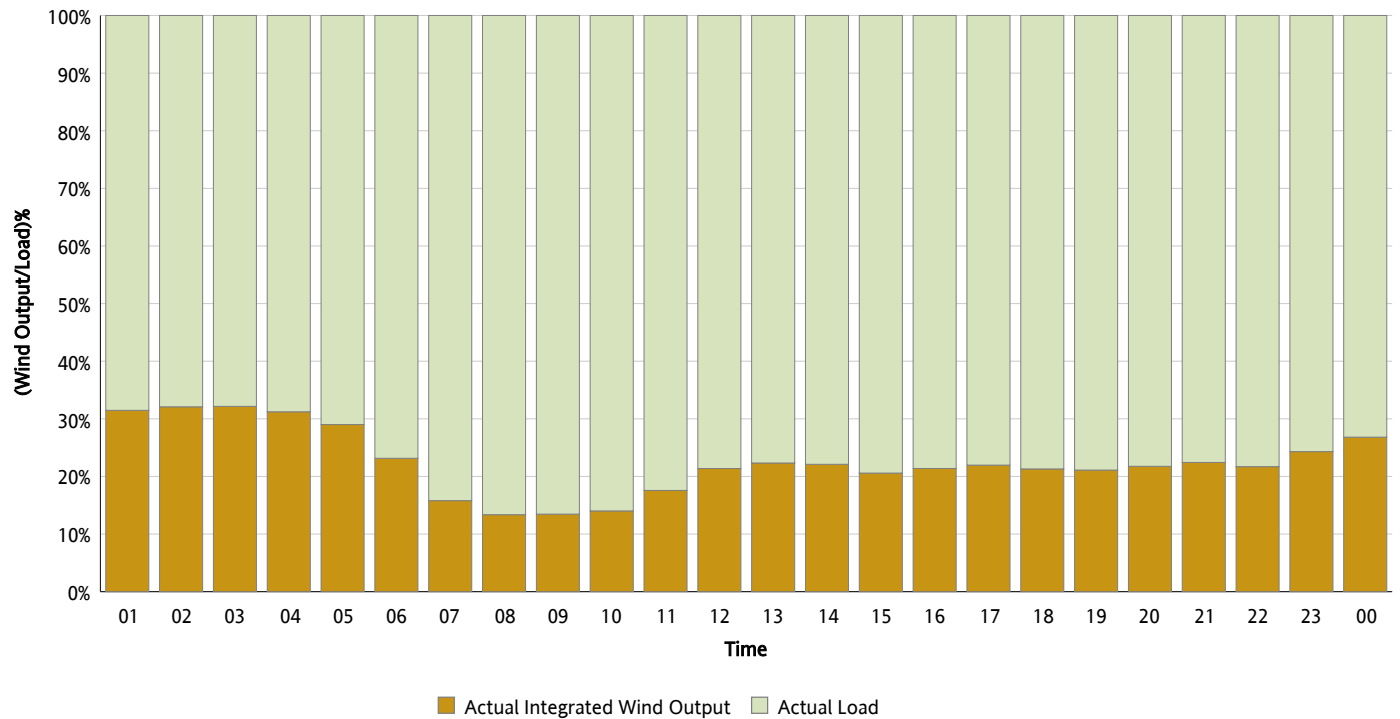
## Actual Wind Output as a Percentage of the Total Installed Wind Capacity

01/29/2013



## Actual Wind Output as a Percentage of the ERCOT Load

01/29/2013



## ERCOT Load vs. Actual Wind Output

01/22/2013 - 01/29/2013

